

# FOR LEASE

URBAN  
WORKS

## WEST END

SPACES | 1,140 RSF - 3,800 RSF

AVAILABLE NOW



## PITTOCK BLOCK

### 921 SW WASHINGTON ST

BRIAN GREELEY | 503.228.3147 | [bgreeley@urbanworksrealestate.com](mailto:bgreeley@urbanworksrealestate.com)

[urbanworksrealestate.com](http://urbanworksrealestate.com)



# PITTOCK BLOCK



## Address

921 SW Washington St

## Area

West End / CBD

## Available Space

1,140 RSF - 3,800 RSF

## Timing

Available Now

## Uses

Cafe / Retail / Service

## About the District

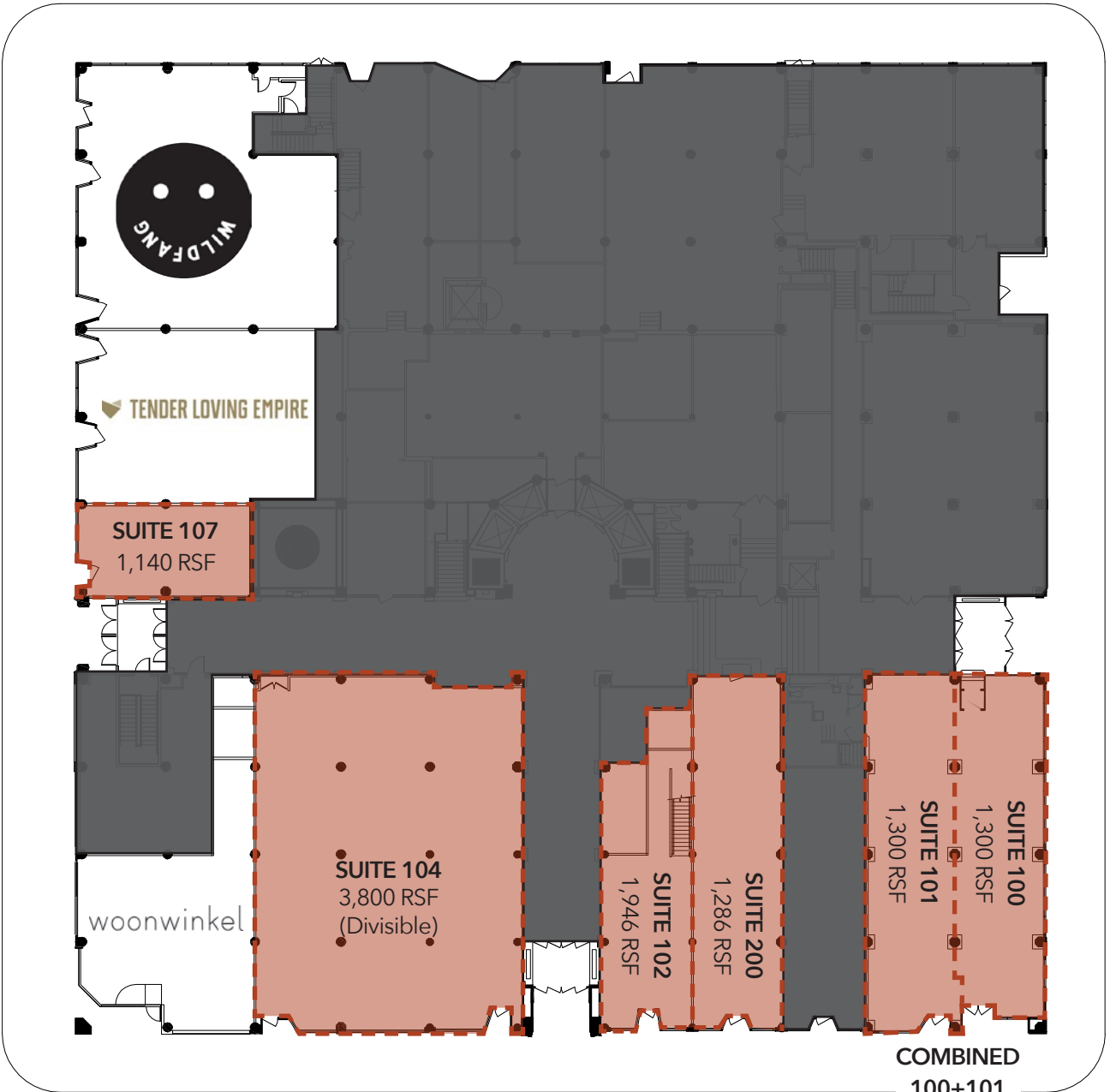
This historic building encompasses a full city block in Portland's trendy West End. Located between Downtown and the Pearl District, the West End neighborhood is home to the Ritz Carlton, Woodlark Hotel, Sentinel Hotel, Multnomah Whiskey Library, Shake Shack, Patagonia, Stumptown, Dolly Olive, Cheryl's on Twelfth, Grassa, Bamboo Sushi and the new 11W residential tower.



# SITE PLAN



SW Harvey Milk St



SW 10TH Ave

SW 9TH Ave



SW Washington St



THE RITZ-CARLTON



# NEIGHBORHOOD



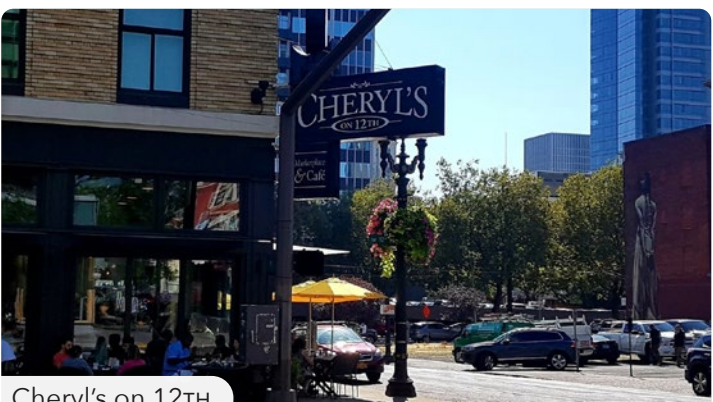
Demographics	¼ Mile	½ Mile	1 Mile
2024 Population	3,392	15,785	49,939
Total Employees	23,693	64,412	104,123
Total Businesses	2,080	5,254	9,131
Median Household Income	\$77,959	\$64,896	\$75,205
Median Age	35.5	36.4	34.6
Any College	74.9%	76.9%	82.3%



Bullard



Multnomah Whiskey Library



Cheryl's on 12th



Roche Bobois



Jake's Grill



Wildfang



# RETAIL MAP

