

FOR LEASE

URBAN
WORKS

SLATE



RETAIL



SERVICE



WELLNESS



CREATIVE

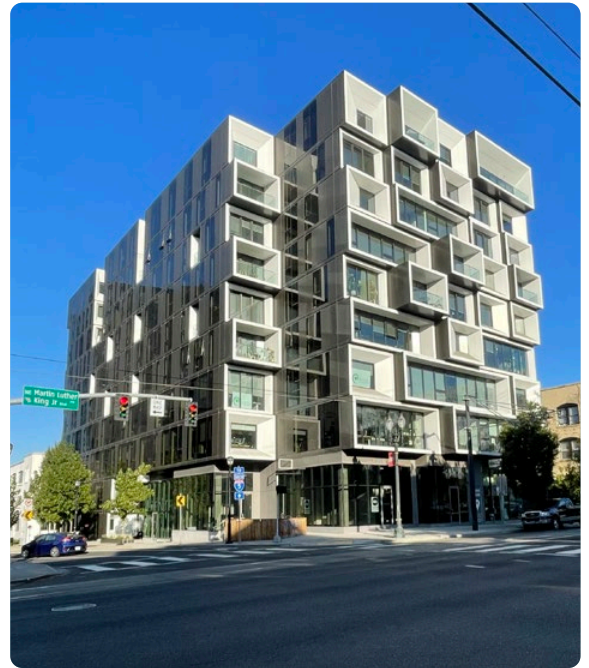
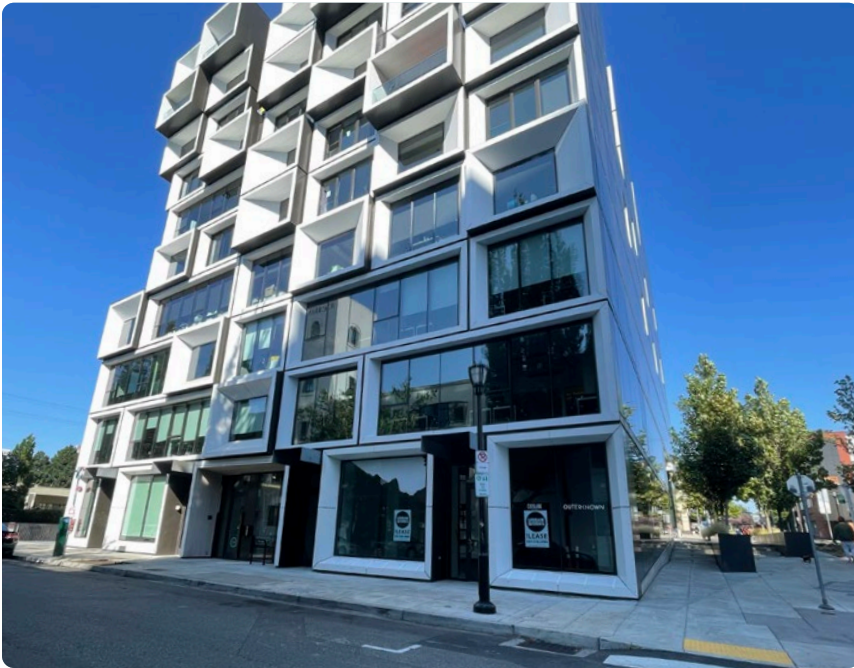
2,238 SF CREATIVE OFFICE / RETAIL

312 NE COUCH ST

BRIAN GREELEY | 503.228.3147
bgreeley@urbanworksrealestate.com

TYLER BRUSS | 503.228.3274
tbruss@urbanworksrealestate.com

urbanworksrealestate.com



About the Building

Slate is one of the first new development projects built to anchor the Burnside Bridgehead. The building's eye catching exterior is home to 75 high-end apartment units with retail and office covering the first 4 floors. The available ground floor opportunity is a creative office/service space with views of downtown.

Address

321 NE Couch St

Area

Burnside Bridgehead /
Central Eastside

Available Space

2,238 SF

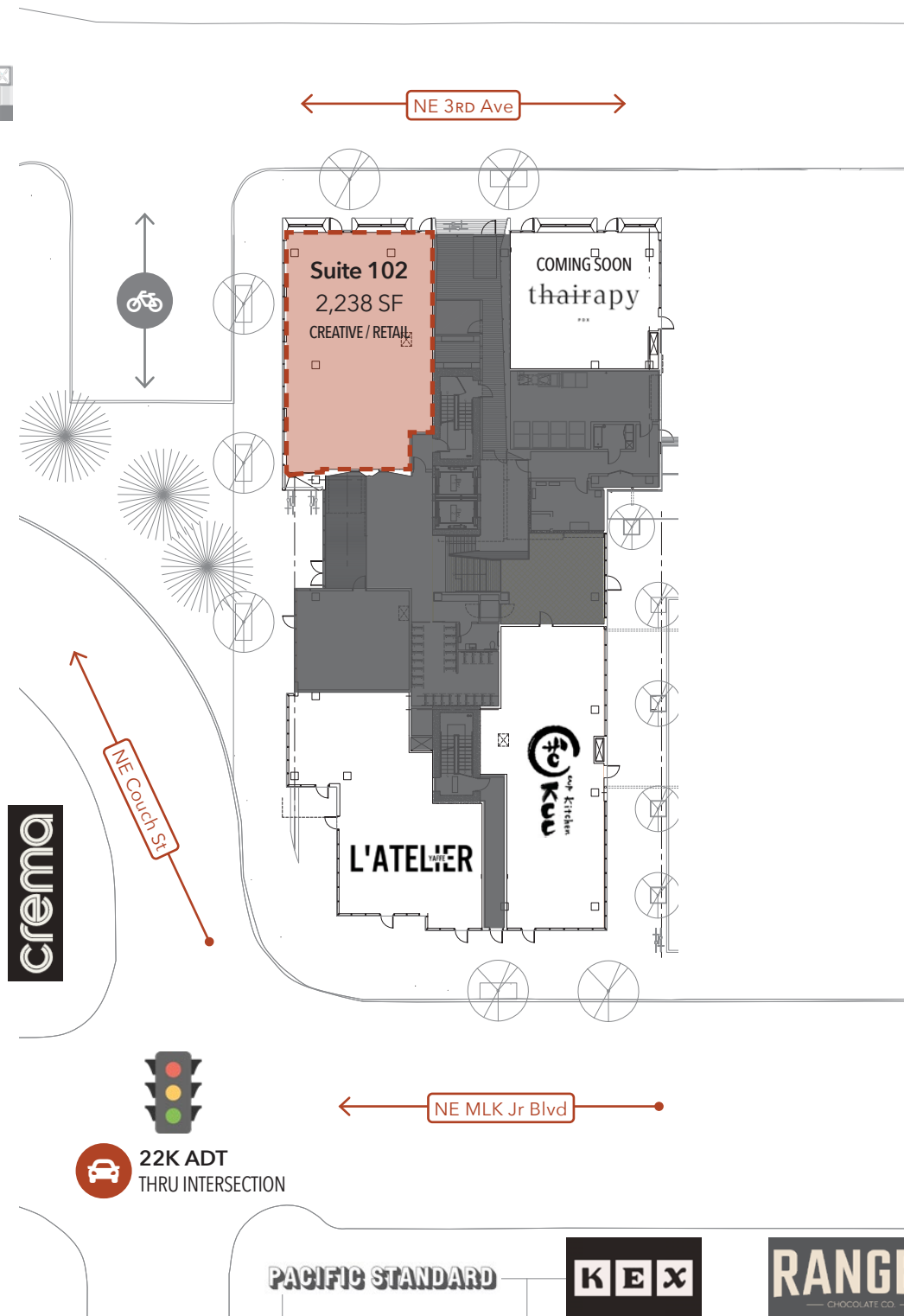


SITE PLAN



KNOT SPRINGS
SOCIAL CLUB

WILLAMETTE RIVER, EASTSIDE ESPLANADE & KEVIN J DUCKWORTH MEMORIAL DOCK



NEIGHBORHOOD



Demographics	¼ Mile	½ Mile	1 Mile
2023 Population	1,024	4,266	26,419
Total Employees	3,010	16,206	94,148
Total Businesses	333	1,377	7,967
Median Household Income	\$76,309	\$62,566	\$69,434
Median Age	32.8	36	38.1
Any College	83%	73%	79%



Ranger



Knot Springs



Rontoms



Le Pigeon



KEX



Produce Row



Wayfinder

AREA RETAIL



INFORMATION CONTAINED HEREIN IS FROM SOURCES DEEMED RELIABLE, BUT NOT GUARANTEED.