

FOR LEASE

URBAN
WORKS

Asa

FLATS + LOFTS

NW 12TH & LOVEJOY ST

SPACE | 1,000 SF - 2,550 SF



SECOND GENERATION OPPORTUNITIES ON HIGH TRAFFIC PEARL DISTRICT BLOCK

DAN BOZICH | 503.228.3135
dbozich@urbanworksrealestate.com

KIA HARTLEY | 503.228.3209
khartley@urbanworksrealestate.com

urbanworksrealestate.com

ASA FLATS + LOFTS



The Building

Address | 1209 NW Lovejoy St **Area** | Pearl District **Uses** | Fitness / Service / Retail / Office / Medical

Asa Flats + Lofts is a LEED Gold Certified mixed-use project featuring 231 market rate apartments and lofts above retail space. Its central location in Portland's Pearl District is easily accessible to major arterials and freeways.

The Pearl District provides the perfect nexus of new and old, housing and employment, culture and entertainment. Portlanders and tourists alike converge in this neighborhood to experience the blend of national, regional and local retailers with the charm of mixed-use living.



AVAILABLE SPACES



Space 1 - 1,717 SF

This second generation fitness studio space near the busy intersection of NW 12th & NW Lovejoy Streets is perfect for retail/service users.



Space 2 - 1,147 SF

Second generation salon space across from Portland's busiest Safeway.



Space 3 - 1,000 SF

Office space available directly across from Portland's busiest Safeway.



Space 4 - 2,550 SF

Second generation dental office with bright reception area and built-out treatment rooms.



NEIGHBORHOOD



Demographics	¼ Mile	½ Mile	1 Mile
2024 Population	7,436	17,420	43,404
Total Employees	5,618	19,532	79,922
Total Businesses	640	2,001	7,673
Median Household Income	\$99,926	\$96,998	\$80,090
Median Age	40.4	39.1	38.2
Any College	88%	86.9%	83.4%



Jamison Square



Barry's



Sisters Coffee



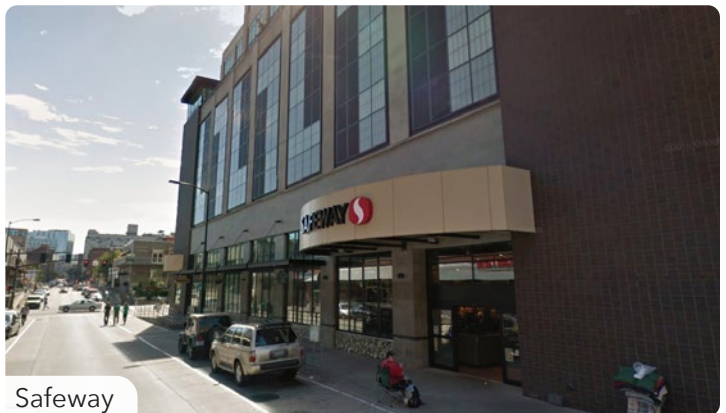
Design Within Reach



Carlita's



Cool Moon



Safeway

RETAIL MAP



INFORMATION CONTAINED HEREIN IS FROM SOURCES DEEMED RELIABLE, BUT NOT GUARANTEED.