

FOR LEASE

URBAN
WORKS

NEW MIXED-USE DEVELOPMENT

RETAIL OPPORTUNITIES RANGING FROM 683 SF - 8,321 SF



SPLASH

NE SANDY BLVD @ NE 27TH AVE

DAN BOZICH | 503.228.3135
dbozich@urbanworksrealestate.com

BRIAN GREELEY | 503.228.3147
bgreeley@urbanworksrealestate.com

urbanworksrealestate.com

SPLASH



Address

NE Sandy Blvd @ NE 27th

Area

Close-in NE / Kerns

Space

683 SF - 8,321 SF

Timing

Available Now

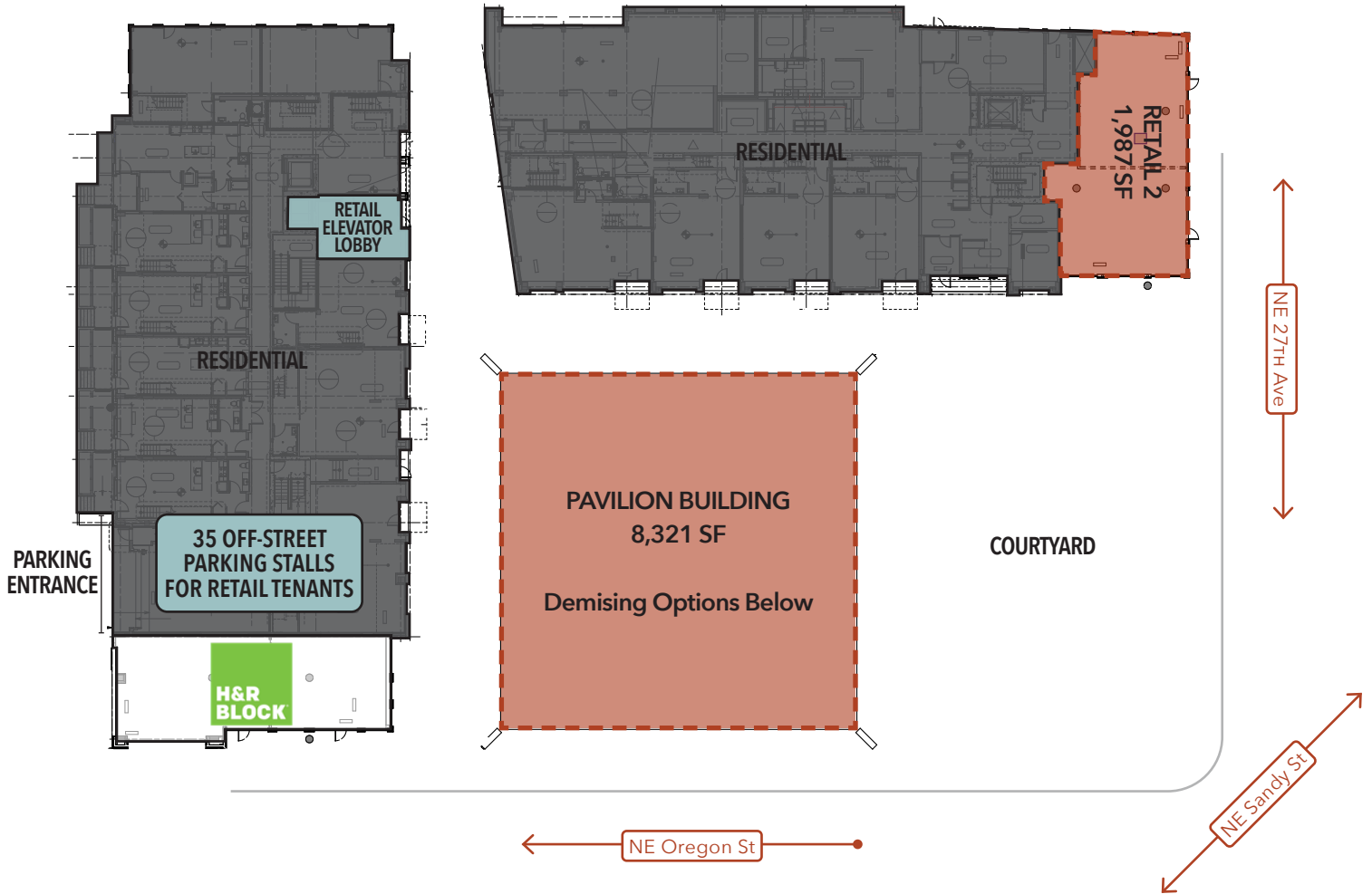
The Development

Exciting new development on prime corner along NE Sandy Blvd. Retail spaces within a brand new 219 unit apartment project. 35 off-street parking spaces available for retail customers.

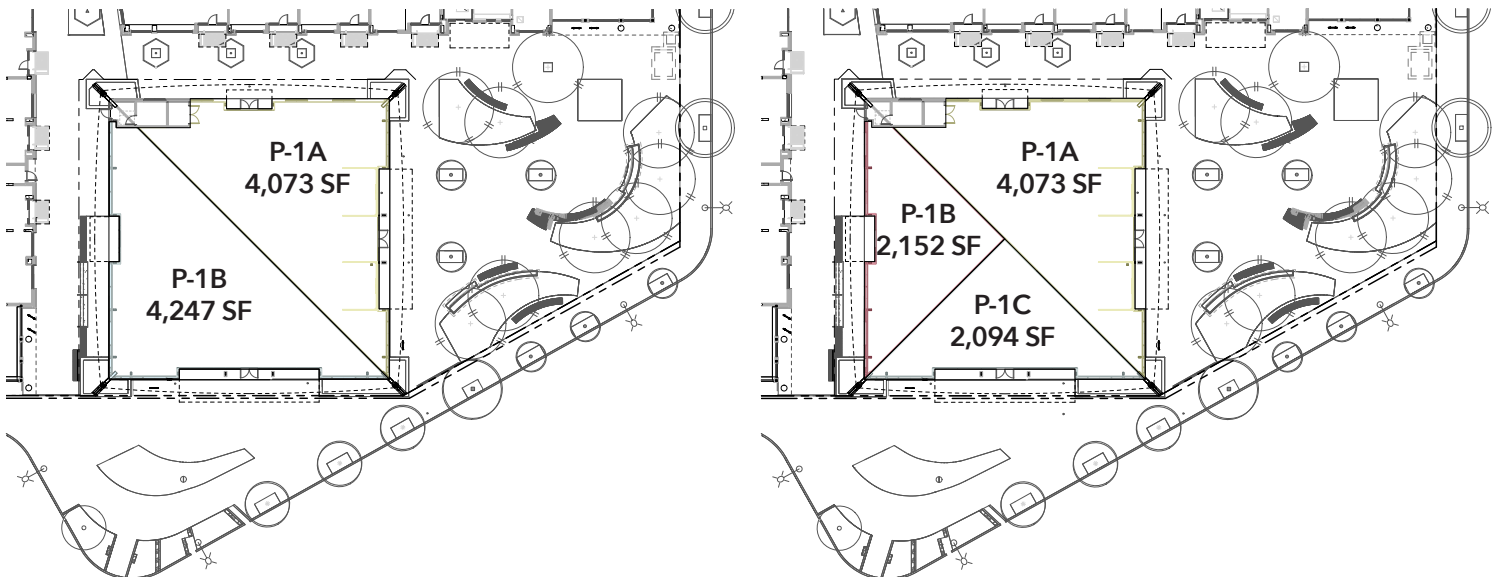


Pavilion Building Interior

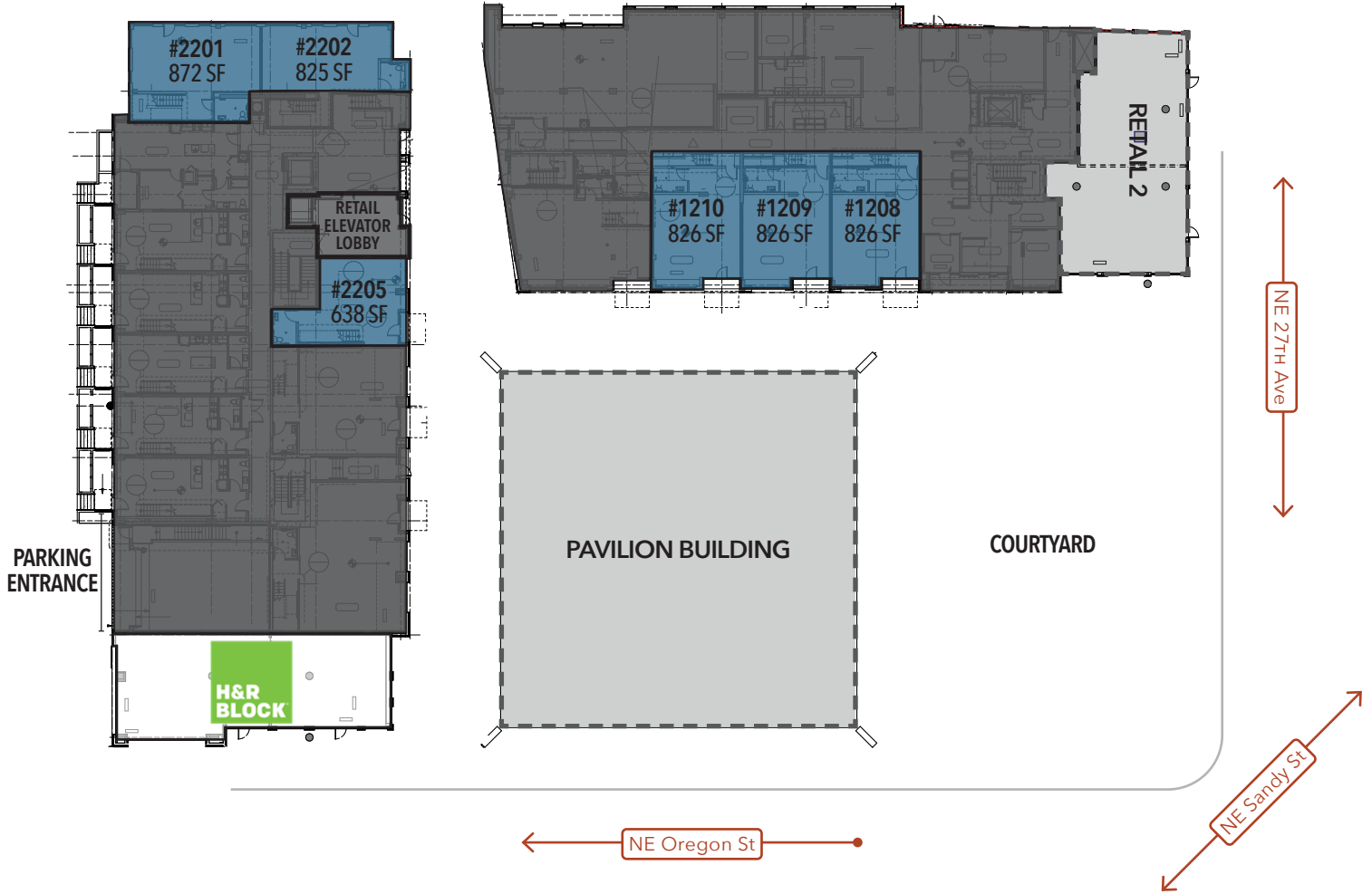
RETAIL SITE PLAN



PAVILION BUILDING DEMISING OPTIONS:



MICRO RETAIL



NEIGHBORHOOD



Demographics	¼ Mile	½ Mile	1 Mile
2024 Population	1,624	8,538	32,192
Total Employees	1,448	9,761	35,654
Total Businesses	166	1,095	3,491
Median Household Income	\$57,278	\$65,493	\$79,147
Median Age	34.3	36.2	37.4
Any College	87.3%	86.5%	88.2%



