

# FOR SALE



4700 SE INTERNATIONAL WAY  
MILWAUKIE, OR



## HEADQUARTERS OPPORTUNITY

**BUILDING SIZE: 12,402 SF | LOT SIZE: APPROX. 1.13 AC**

TYLER BRUSS | 503.228.3274  
tbruss@urbanworksrealestate.com

RON DOWHANIUK | 503.228.3262  
rdowhaniuk@urbanworksrealestate.com

urbanworksrealestate.com

# THE OPPORTUNITY



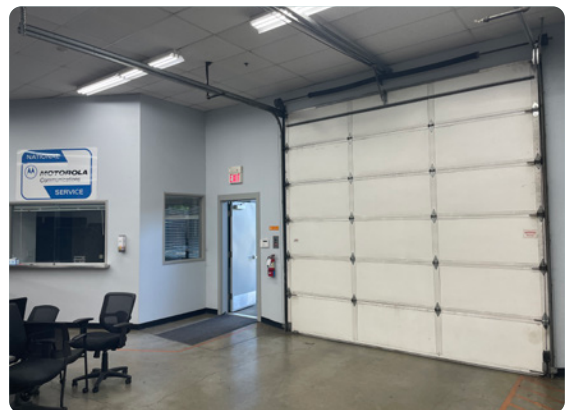
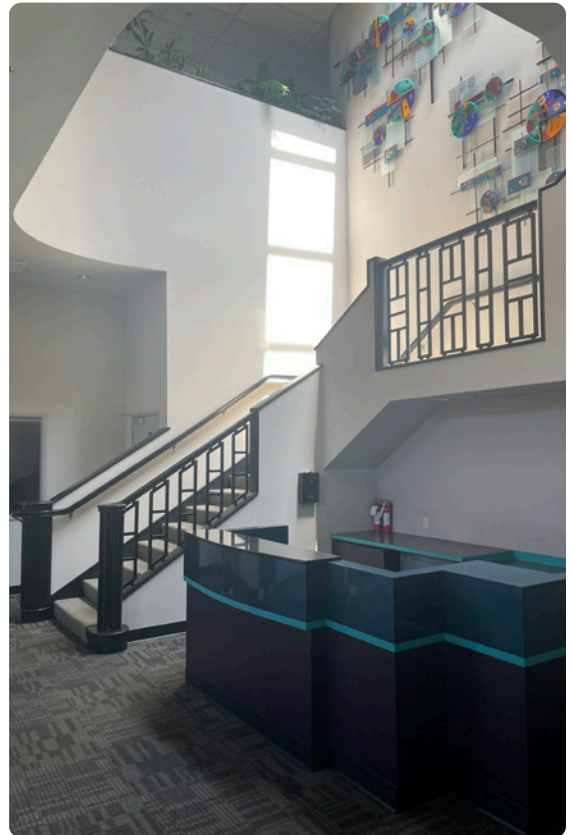
<b>Address</b>	4700 SE International Way Milwaukie, OR 97222
<b>County</b>	Clackamas
<b>Gross Leasable Area</b>	12,402 SF Ground Floor   6,000 SF Second Floor   6,402 SF
<b>Year Built</b>	1989
<b>Parking</b>	+/- 40 Parking Stalls

## Investment Highlights

- Incredible "turn key" owner/user opportunity in Clackamas County
- Excellent visibility and dedicated monument sign facing the Milwaukie Expressway (30,417 CPD)
- Easy access with connection to major highways and freeways
- Expansive window lines with skylights providing ample natural light
- Building is well laid out including open bullpen spaces, private offices, kitchenette and break room, large conference space, clean warehouse space, and expansive entry
- 2 roll-up bay doors
- On-site green space and pedestrian walking paths
- Immediate proximity to public transit



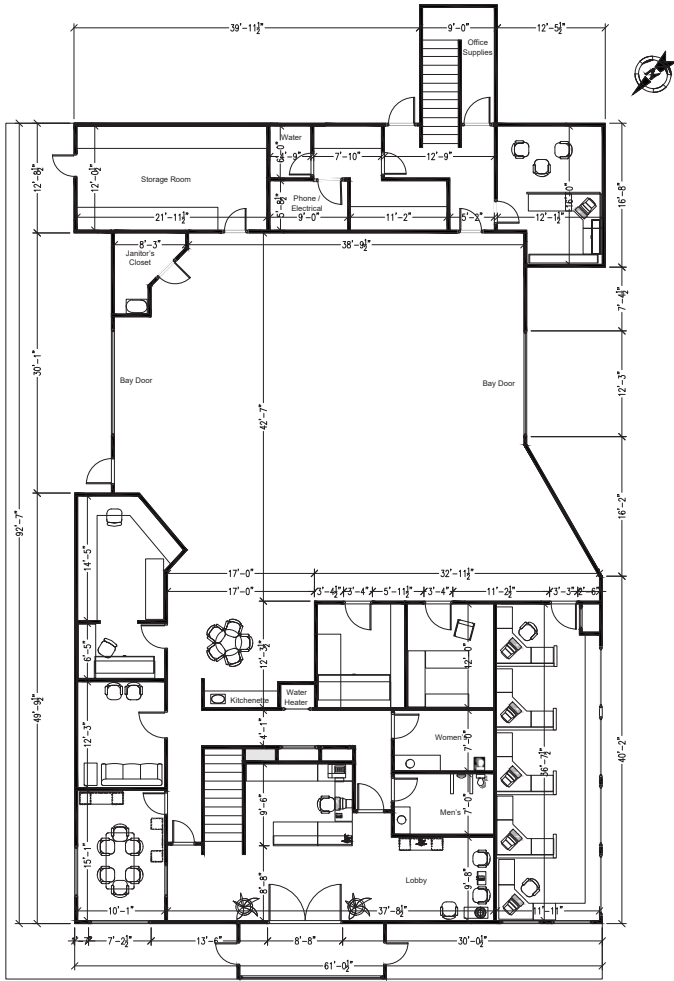
# INTERIOR PHOTOS



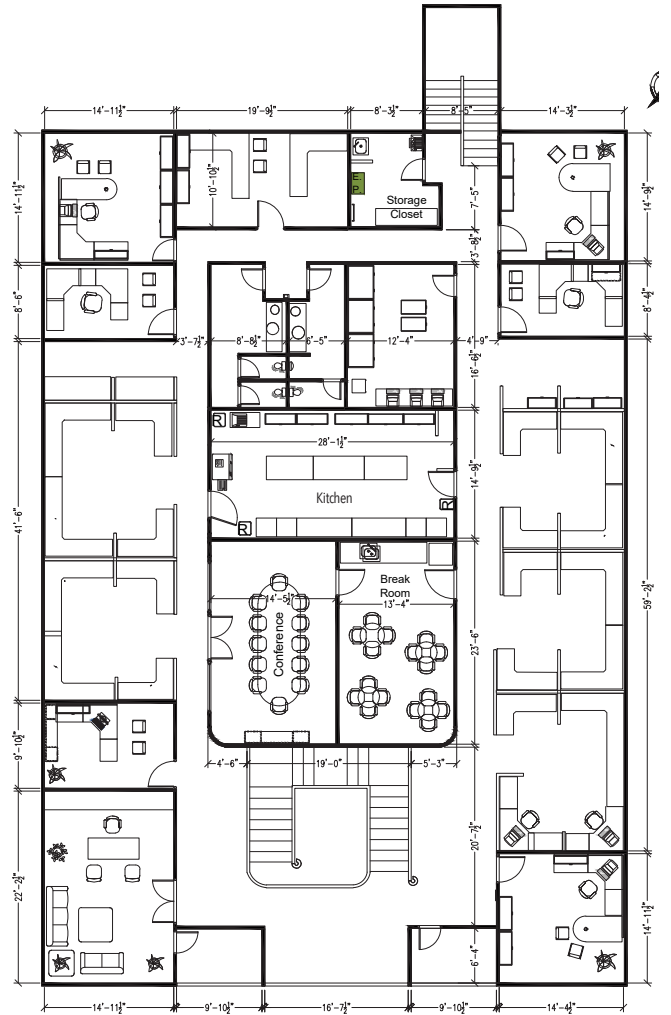
# FLOOR PLAN



FIRST FLOOR | 6,000 SF



SECOND FLOOR | 6,402 SF



# AREA

