

FOR LEASE

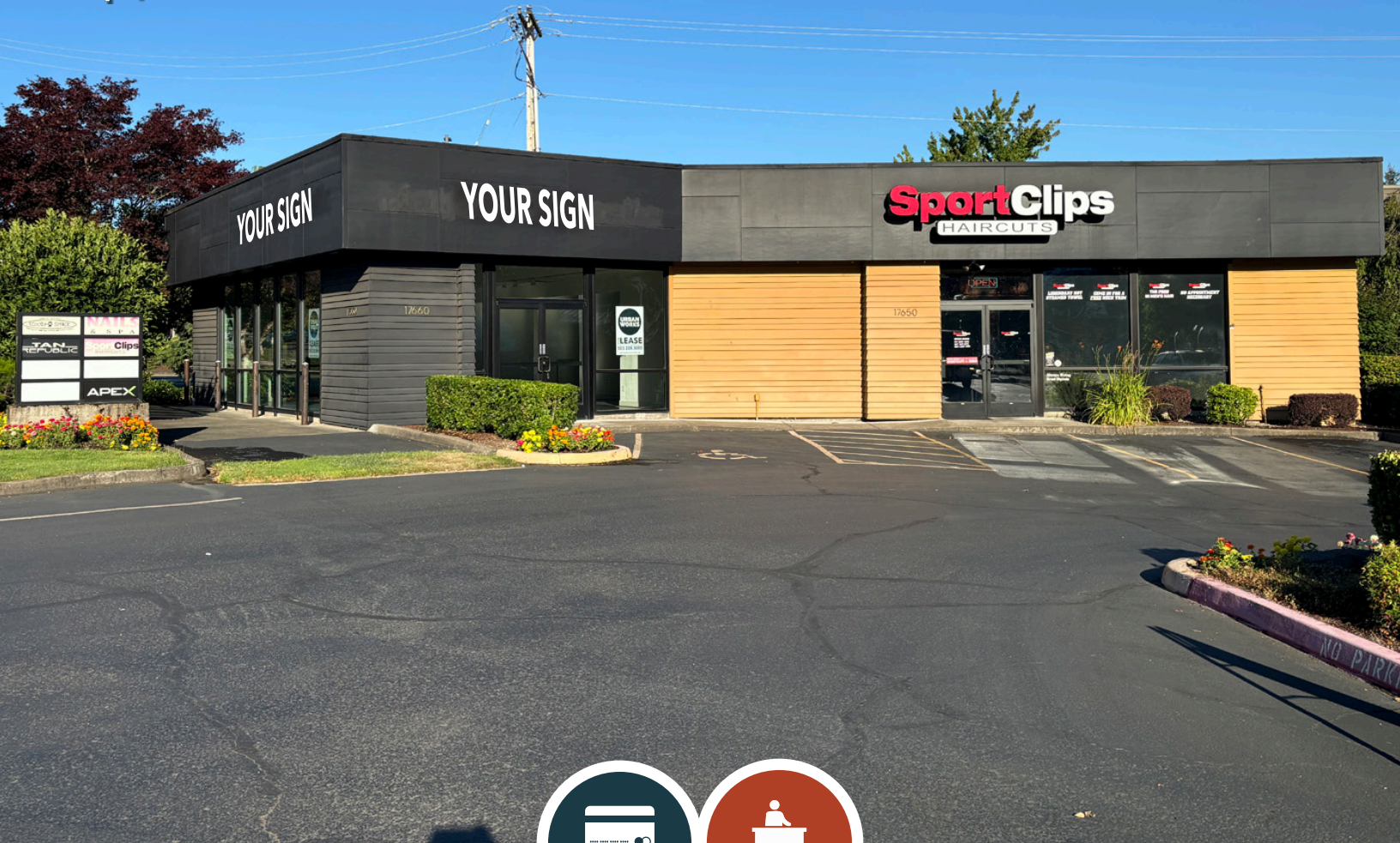
URBAN
WORKS

HIGHLY VISIBLE ENDCAP

PRIME CORNER LOCATION IN LAKE OSWEGO

AVAILABLE NOW

SIZE | 1,520 SF



RETAIL



SERVICE

HANSEN'S CORNER

17660 SW 63RD AVE | LAKE OSWEGO

DAN BOZICH | 503.228.3135
dbozich@urbanworksrealestate.com

KIA HARTLEY | 503.228.3209
khartley@urbanworksrealestate.com

urbanworksrealestate.com



Signage

Address

17660 SW 63rd Ave

Area

Lake Oswego

Space

1,520 SF

Timing

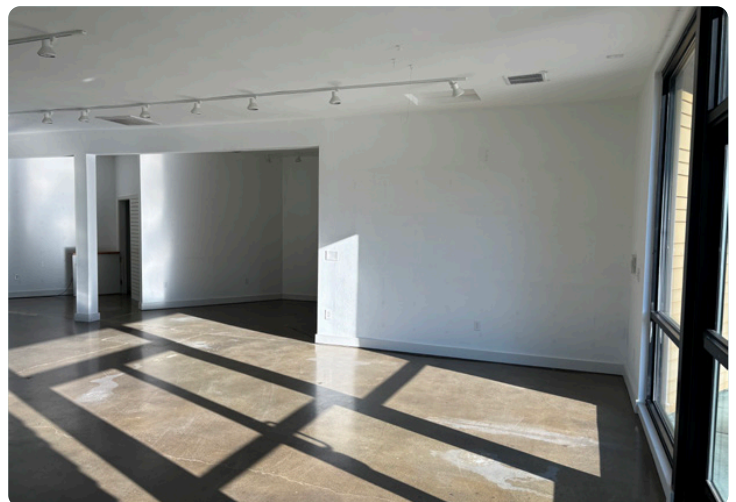
Available Now

Uses

Retail / Service

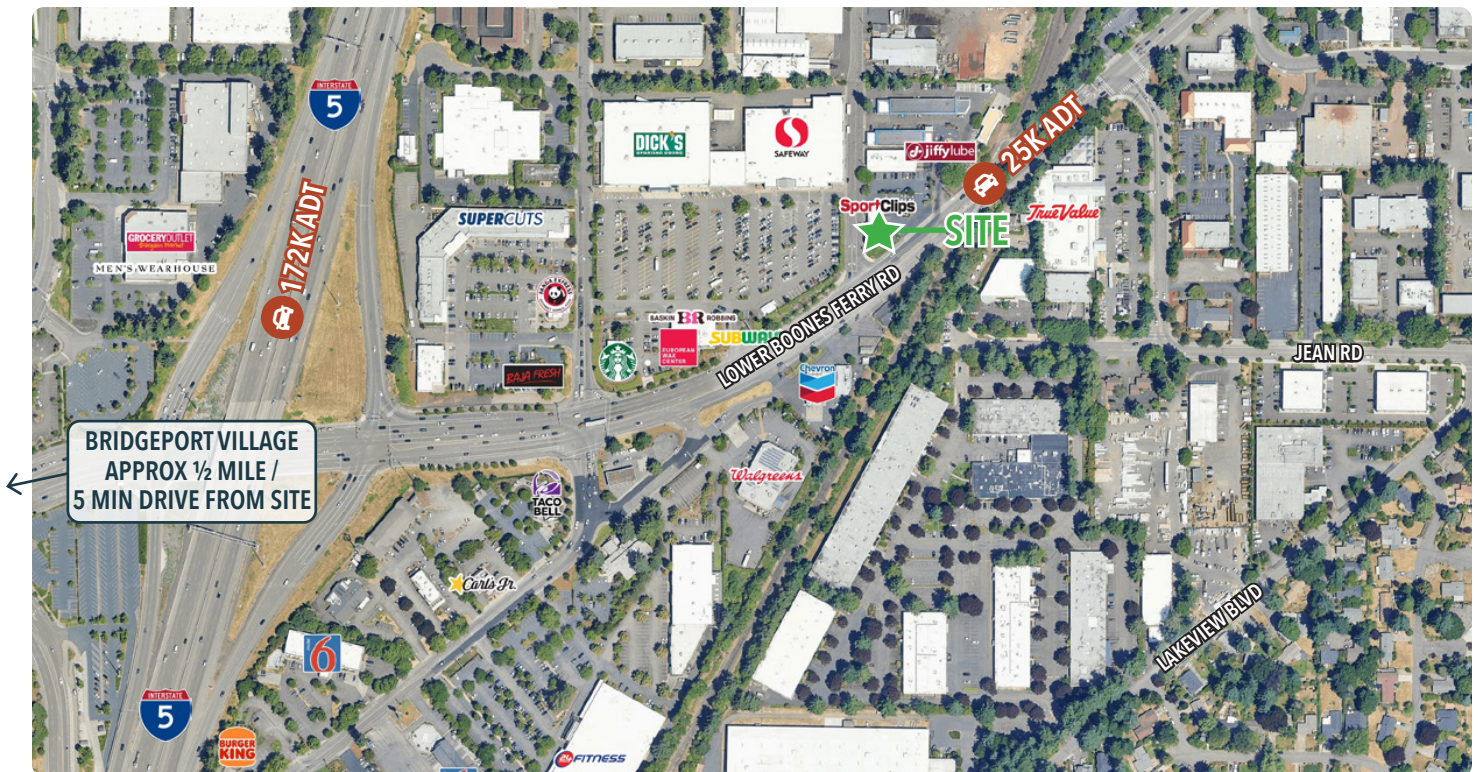
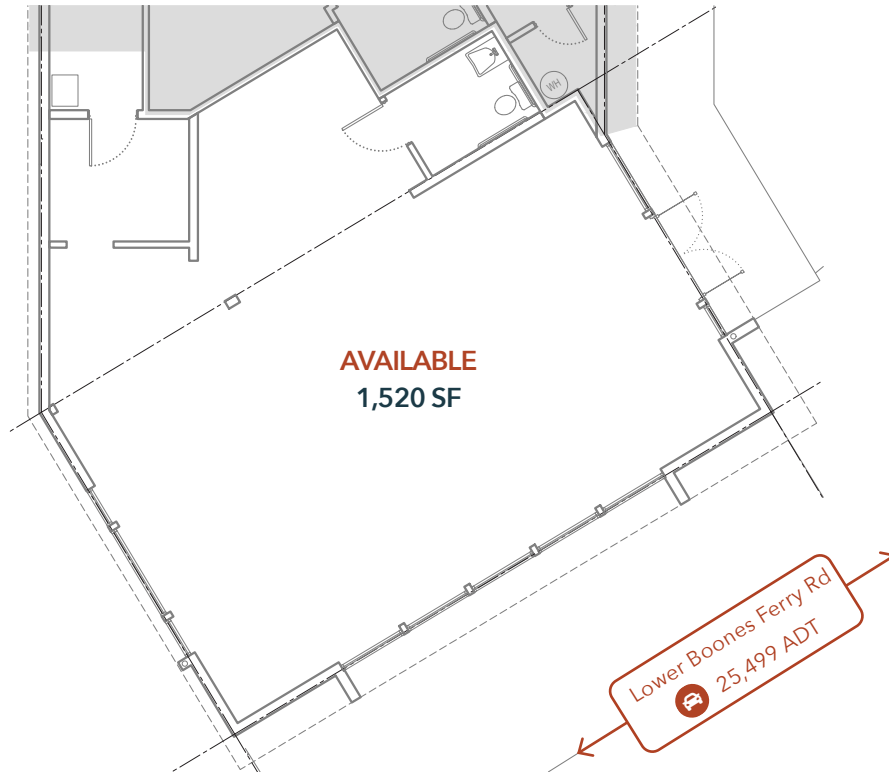
About the Space

Beautiful endcap in Lake Oswego with large glass line facing Lower Boones Ferry Road. Onsite parking is available for employees and customers. Space is large and open with one ADA restroom and small office/ storage room.



View from Lower Boones Ferry Rd

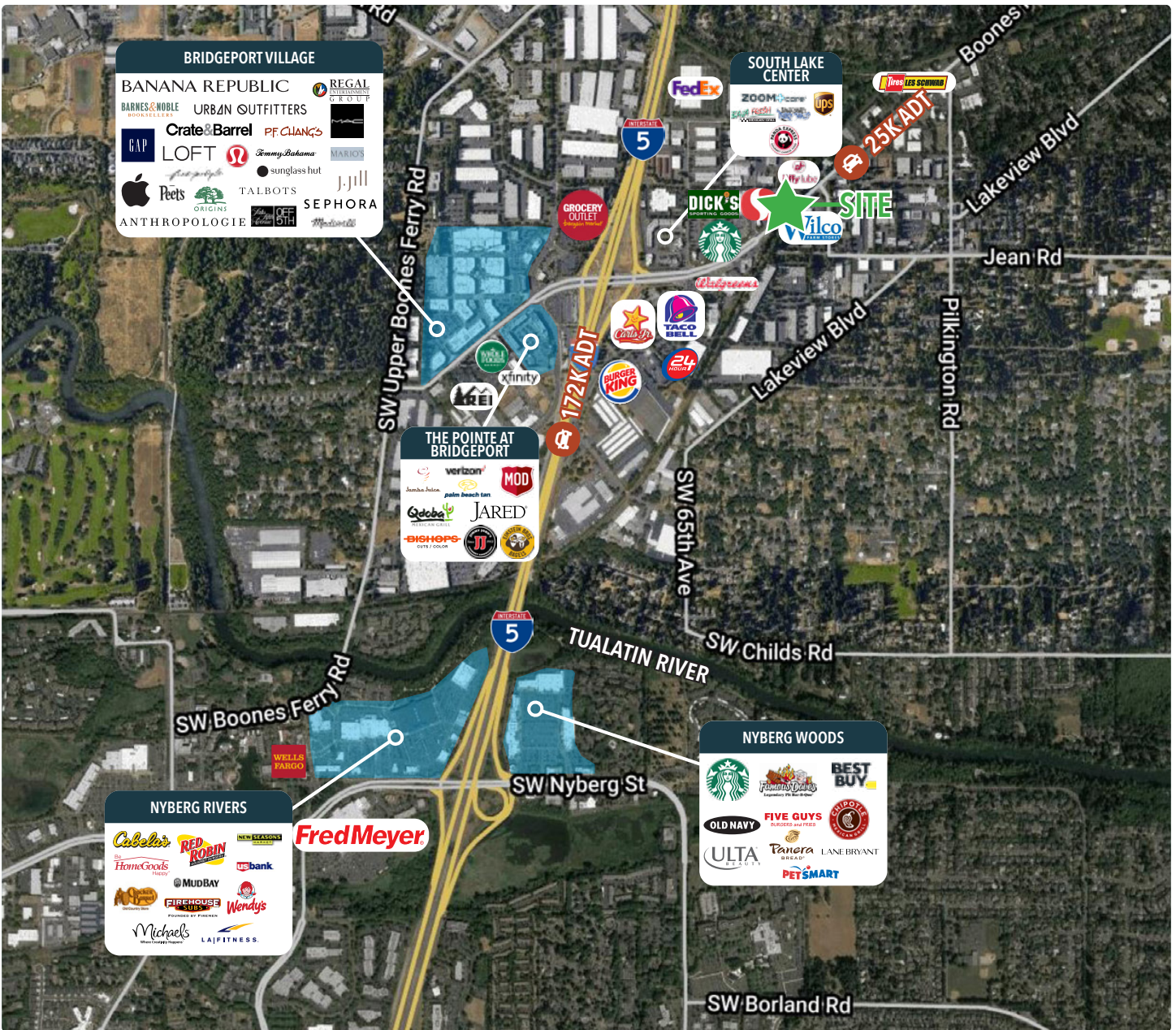
SITE PLAN



NEIGHBORHOOD



Demographics	½ Mile	1 Mile	3 Miles
2024 Population	1,709	7,354	27,022
Total Employees	452	4,321	22,083
Total Businesses	98	681	3,178
Median Household Income	\$113,641	\$92,559	\$81,319
Median Age	38.7	36.1	35.4
Any College	89.4%	87%	86.6%



INFORMATION CONTAINED HEREIN IS FROM SOURCES DEEMED RELIABLE, BUT NOT GUARANTEED.