

# FOR LEASE

URBAN  
WORKS

## AVAILABLE SPACES

RANGING FROM | 1,216 SF - 2,444 SF

NOW OPEN



COMING SOON

 RAMEN OSWEGO



RESTAURANT



RETAIL



SERVICE



CAFE

## OSWEGO TOWNE SQUARE

### NEIGHBORHOOD CENTER IN LAKE OSWEGO

DAN BOZICH | 503.228.3135  
dbozich@urbanworksrealestate.com

KIA HARTLEY | 503.228.3209  
khartley@urbanworksrealestate.com

urbanworksrealestate.com

# OSWEGO TOWNE SQUARE



## Tenant Mix

New Seasons has served as the center's anchor since 2006. Starbucks has an end cap location and has been in the center since 1998. The grocery and coffee anchors create a draw to the center which features a strong lineup of local, regional and national credit tenants. Other notable tenants include: Columbia Sportswear, Flying Pie Pizzeria, and KinderCare.

## Excellent Location

Oswego Towne Square is well maintained and features ample parking. Conveniently located in the affluent Mountain Park area. Customers are afforded easy access to the center from the intersection of Monroe Pkwy and Boones Ferry Road.

## Current Tenants Include:



## Address

Boones Ferry Rd & Monroe Parkway

## Area

Lake Oswego - Mountain Park Neighborhood

## Uses

Restaurant / Retail / Service / Cafe

## Available Spaces Ranging From

1,216 SF - 2,444 SF

## Exterior Renovations

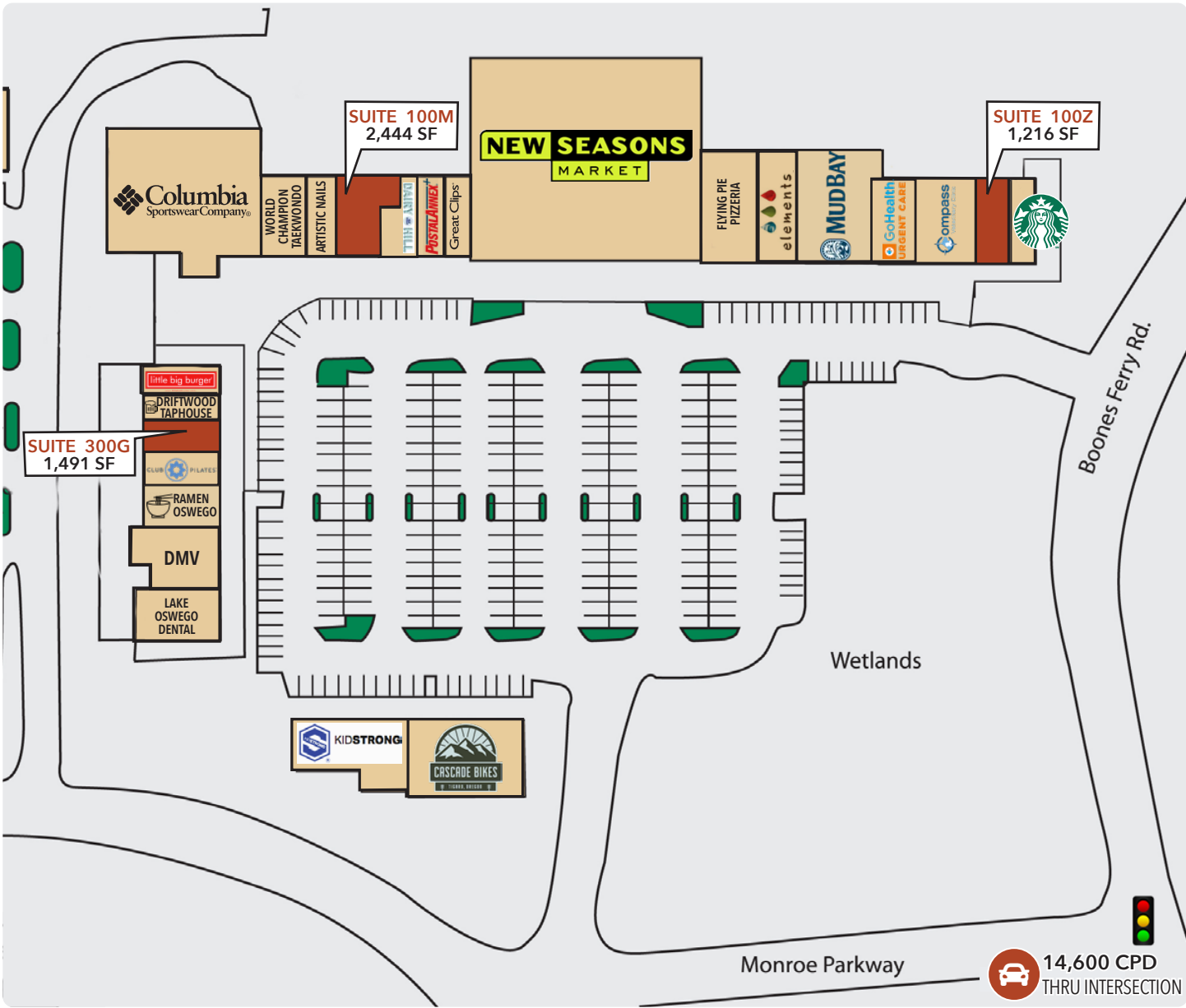
Oswego Towne Square recently underwent exterior renovations



# SITE PLAN



Demographics	½ Mile	1 Mile	3 Miles
2024 Population	3,027	11,976	92,963
Total Employees	1,113	2,840	58,963
Total Businesses	207	588	8,147
Average Household Income	\$195,561	\$183,396	\$182,714
Median Age	46.8	45.6	42.9
Any College	90.8%	90.6%	88.5%



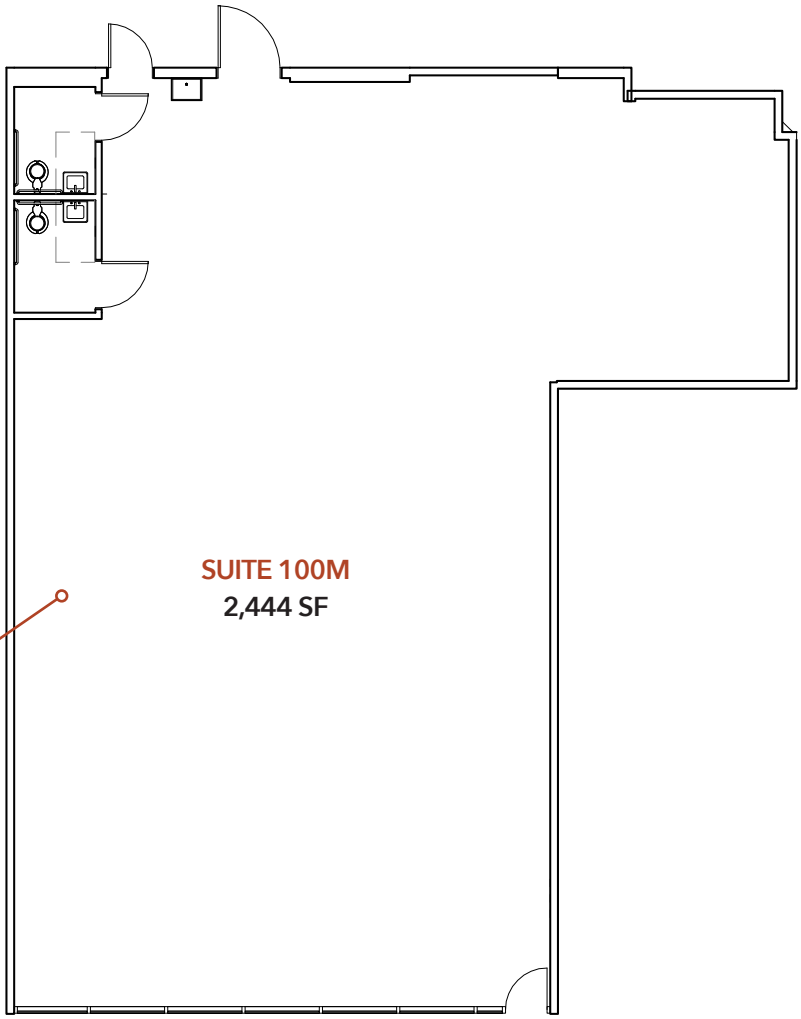
14,600 CPD  
THRU INTERSECTION

# SUITE 100M



Suite 100M Exterior

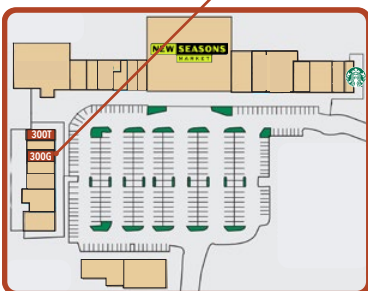
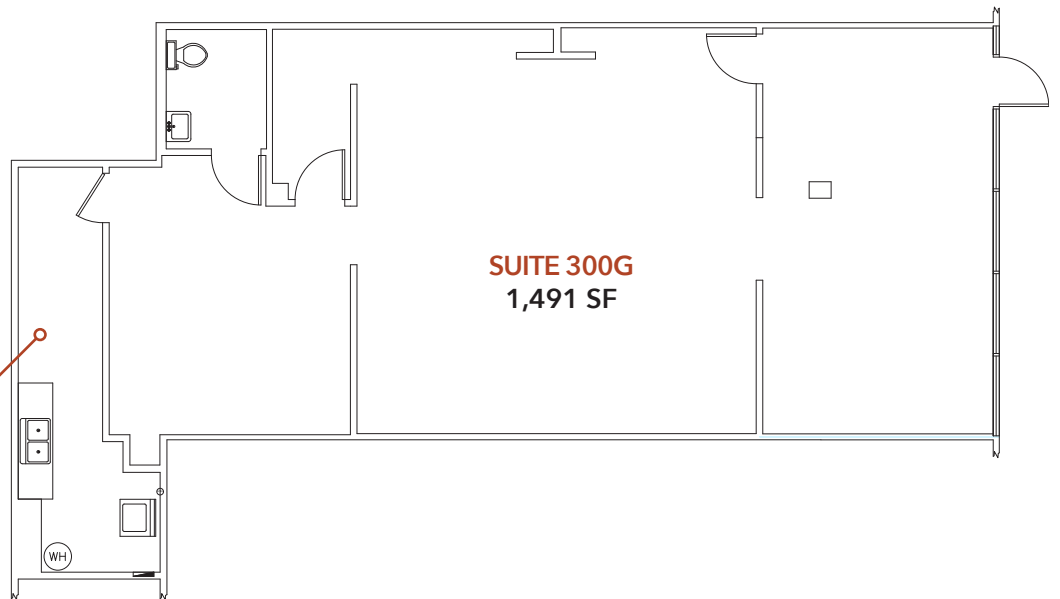
**Suite 100M** | Office / service space with two ADA restrooms.



# SUITE 300G & SUITE 100T



**Suite 300G** | Second generation retail / service with one ADA restroom.

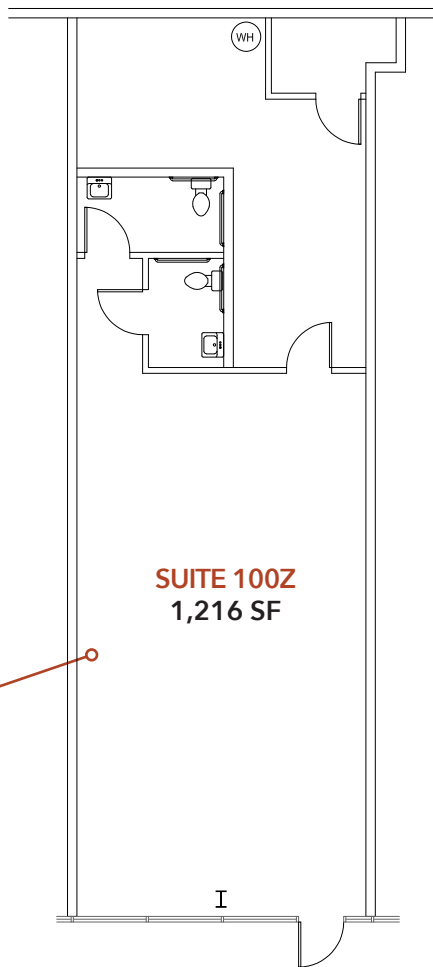




# SUITE 100Z



**Suite 100Z** | Office / service space with two ADA restrooms. The space is visible from Boones Ferry Road and conveniently located close to the center's entrance.



**SUITE 100Z**  
1,216 SF

