

FOR LEASE

URBAN
WORKS

JUNIPERO
BUILDING



AVAILABLE SPACE | 2,080 SF



CREATIVE



SERVICE



OFFICE



WELLNESS

2904 NE ALBERTA ST

UPSTAIRS CREATIVE OFFICE / SERVICE SPACE

KIA HARTLEY | 503.228.3209
kheartley@urbanworksrealestate.com

CHARLOTTE LARSON | 503.228.3165
clarson@urbanworksrealestate.com

urbanworksrealestate.com



About the Building

The Junipero Building recently underwent a full renovation. The building features corner ground floor retail with sliding storefront windows, as well as second floor creative office space for lease.

Address

2904 NE Alberta St

Area

Alberta Arts District

Available Space

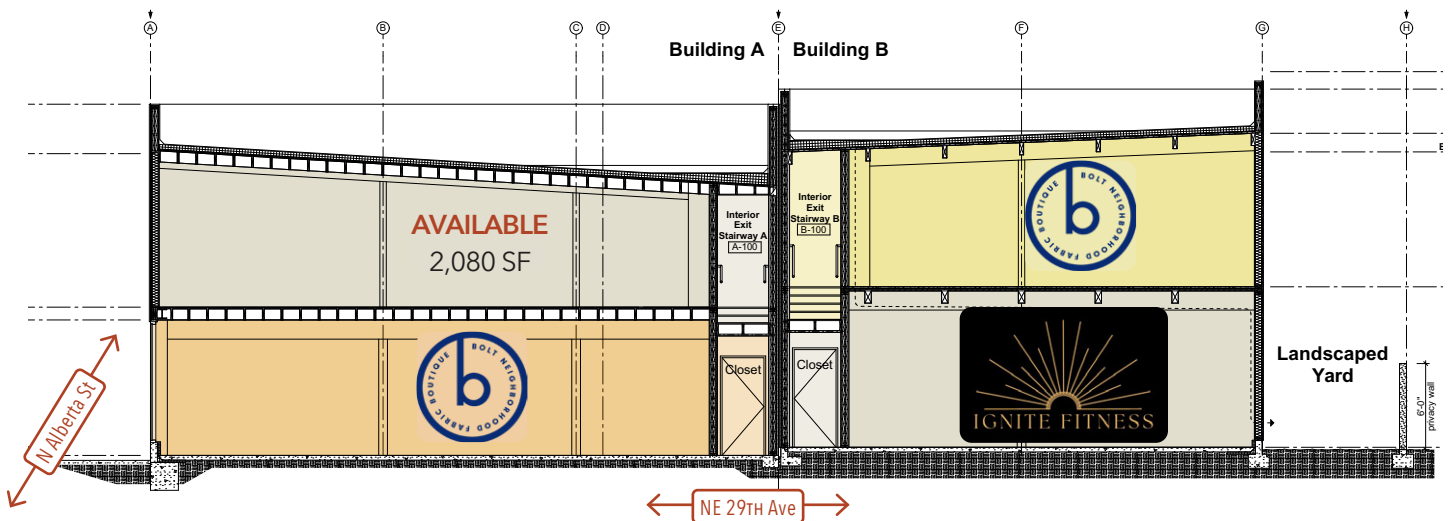
2,080 SF

Timing

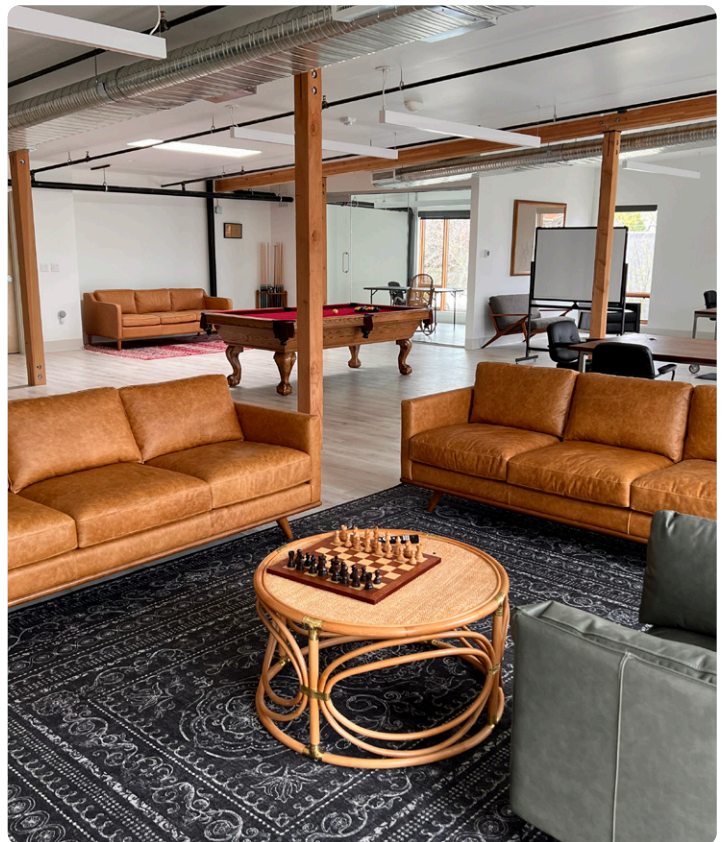
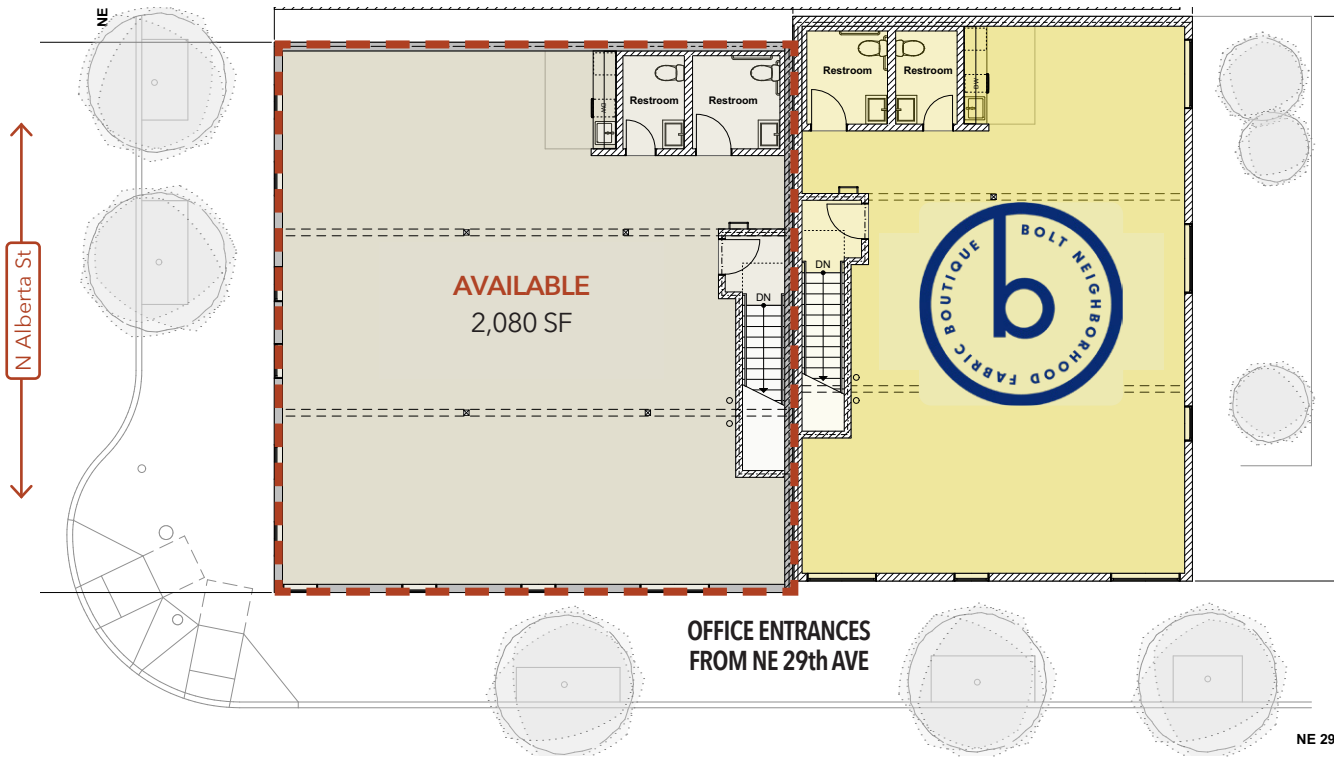
Available Now

Uses

Creative / Service / Office / Wellness



SECOND FLOOR OFFICE



NEIGHBORHOOD



| Demographics | ¼ Mile | ½ Mile | 1 Mile |
|-------------------------|----------|-----------|-----------|
| 2024 Population | 2,191 | 7,542 | 26,284 |
| Total Employees | 687 | 1,936 | 5,542 |
| Total Businesses | 174 | 494 | 1,404 |
| Median Household Income | \$99,575 | \$123,392 | \$134,569 |
| Median Age | 36.9 | 38.6 | 39.7 |
| Any College | 88.1% | 86.4% | 85.9% |



New Seasons

Alberta Arts District

The Alberta Arts District is a vibrant urban neighborhood and a proven location for the local business community. The neighborhood has an eclectic mix of boutiques, galleries, service retail and food establishments. Many of Portland's most highly regarded restaurants and boutiques call Alberta home. Last Thursday has become a ritual for many; the monthly event showcases art and music and draws visitors from all over the greater Portland area to enjoy food, drink, art and shopping on the street.



Tin Shed



INFORMATION CONTAINED HEREIN IS FROM SOURCES DEEMED RELIABLE, BUT NOT GUARANTEED.