



FOR LEASE



CHARMING SECOND FLOOR OFFICE SPACE

AVAILABLE | 1,516 SF

T.C. O'LEARY'S
Pub
Pizzeria
THOMAS CHRISTENSEN, O'LEARY
is Licensed to Sell
BEERS, WINES, SPIRITS
&
GOOD FOOD
HAPPY HOUR
DINNER
WEEKEND BRUNCH

greater than

pie
FOOTWEAR

2916

2916 NE ALBERTA ST

CHARLOTTE LARSON | 503.228.3165 | clarson@urbanworksrealestate.com
urbanworksrealestate.com

GROUND FLOOR RETAIL



← NE Alberta St →



Address

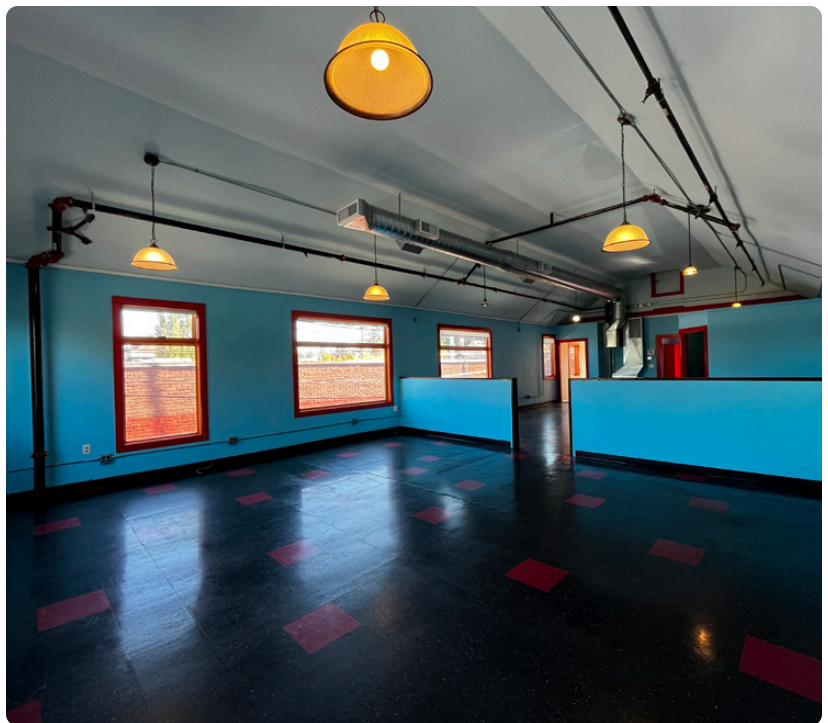
2916 NE Alberta St

Size

1,516 SF

About the Space

This second floor space is perfect for an office, creative office or service retail oriented user. The space is move-in ready and features an open floor plan with high ceilings and abundant natural light. Includes common bathrooms and a shared outdoor courtyard.



NEIGHBORHOOD



Demographics	¼ Mile	½ Mile	1 Mile
2024 Population	2,191	7,542	26,284
Total Employees	687	1,936	5,542
Total Businesses	174	494	1,404
Median Household Income	\$99,575	\$123,392	\$134,569
Median Age	36.9	38.6	39.7
Any College	88.1%	86.4%	85.9%



New Seasons

Alberta Arts District

The Alberta Arts District is a vibrant urban neighborhood and a proven location for the local business community. The neighborhood has an eclectic mix of boutiques, galleries, service retail and food establishments. Many of Portland's most highly regarded restaurants and boutiques call Alberta home. Last Thursday has become a ritual for many; the monthly event showcases art and music and draws visitors from all over the greater Portland area to enjoy food, drink, art and shopping on the street.



Tin Shed

