

# FOR LEASE

URBAN  
WORKS

**SECOND  
GENERATION  
RESTAURANT**

AVAILABLE SPACE | 1,504 SF

**NW 23RD  
LOCATION**

AVAILABLE NOW



## NORTHROP CENTER

### 1203 NW 23RD AVE

TYLER BRUSS | 503.228.3209  
tbruss@urbanworksrealestate.com

BRIAN GREELEY | 503.228.3147  
bgreeley@urbanworksrealestate.com

urbanworksrealestate.com

# NORTHROP CENTER



NW 23RD Ave Signage

<b>Address</b>	<b>Area</b>
1203 NW 23rd Ave	NW 23rd / Nob Hill
<b>Space</b>	<b>Timing</b>
1,504 SF	Available Now

**Uses**  
Second Generation Restaurant

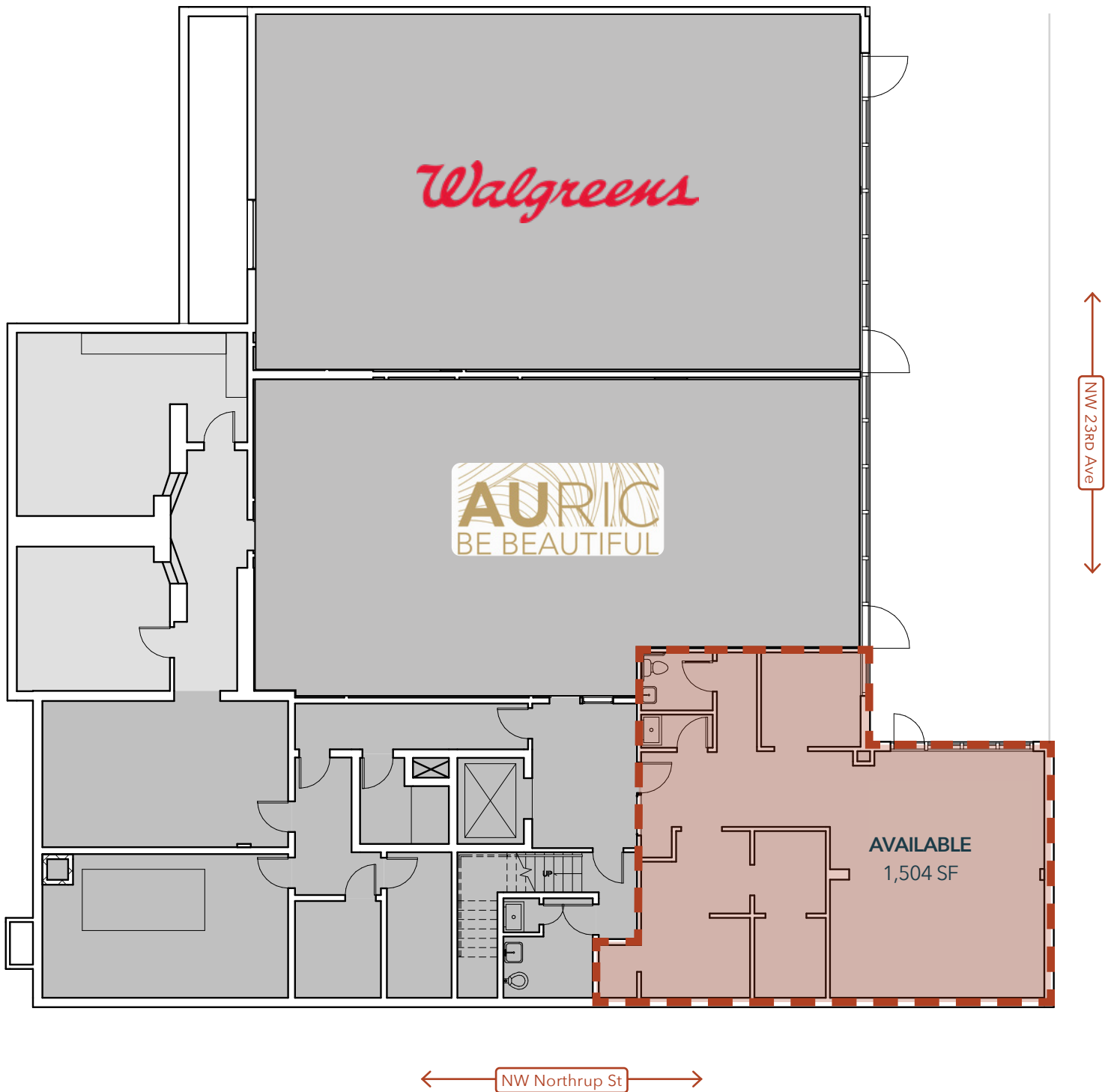
### About the Space

This rare second generation restaurant available on NW 23rd Ave is ideal for a local or national retailer seeking a presence in the heart of Portland’s bustling Northwest District. This restaurant opportunity is inclusive of:

- Highly visible signage to NW 23rd
- Type 1 kitchen hood
- Grease interceptor in place
- Access to dedicated parking lot on NW Northrup St
- ADA accessible ramp
- Dedicated restroom



# SITE PLAN



# NEIGHBORHOOD



Demographics	¼ Mile	½ Mile	1 Mile
2024 Population	3,577	13,382	37,953
Total Employees	3,061	11,257	40,427
Total Businesses	479	1,651	4,360
Median HH Income	\$92,984	\$88,980	\$94,195
Median Age	35.3	36.2	37.6
Any College	89.7%	89.9%	88.7%



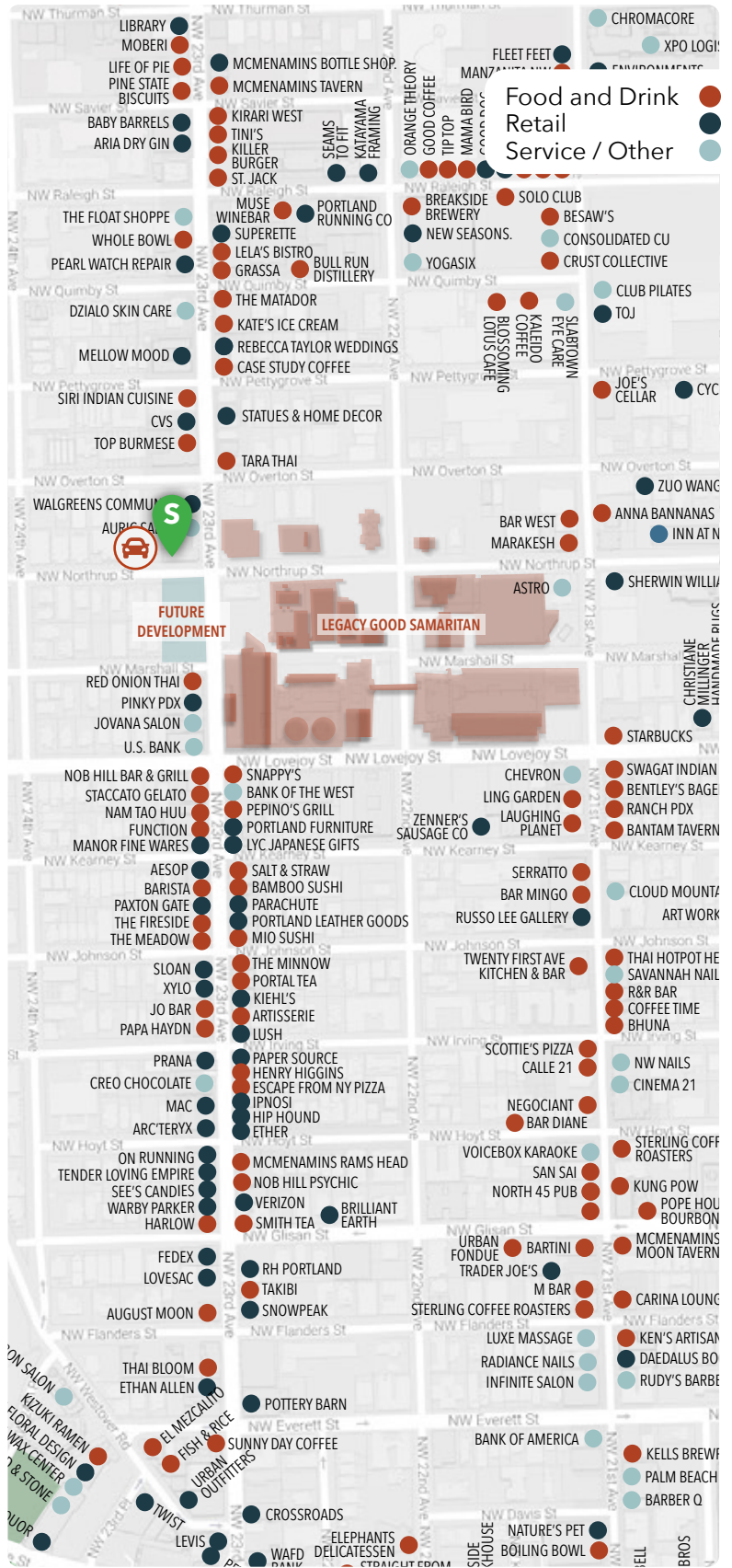
Access to Adjacent Parking



St Jack



Salt & Straw



INFORMATION CONTAINED HEREIN IS FROM SOURCES DEEMED RELIABLE, BUT NOT GUARANTEED.