

FOR LEASE

URBAN
WORKS

PEARL DISTRICT

AVAILABLE NOW | 7,531 SF (DIVISIBLE)

PLEASE DO NOT DISTURB TENANT



RETAIL



SERVICE

515 NW 10TH AVE

PREMIER RETAIL SPACE

DAN BOZICH | 503.228.3135
dbozich@urbanworksrealestate.com

KIA HARTLEY | 503.228.3209
khartley@urbanworksrealestate.com

urbanworksrealestate.com

SUMMARY



About the Space

Second generation ground floor retail/showroom space located in the heart of Portland's Pearl District. The building is conveniently located on the Portland Streetcar line. The surrounding blocks are home to many established shopping and dining destinations such as River Pig Saloon, Andina, Revolv'r, Keen and more. The district is also well known for its high-end home décor and furniture retailers such as French Quarter Linens, Design Within Reach, Joybird, Kohler, Blu Dot and more.

Address

515 NW 10th Ave

Area

Pearl District

Space

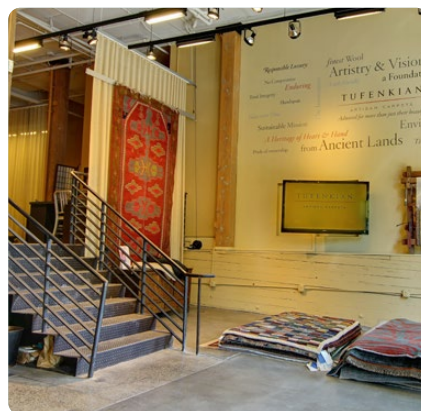
7,531 SF
(Divisible)

Timing

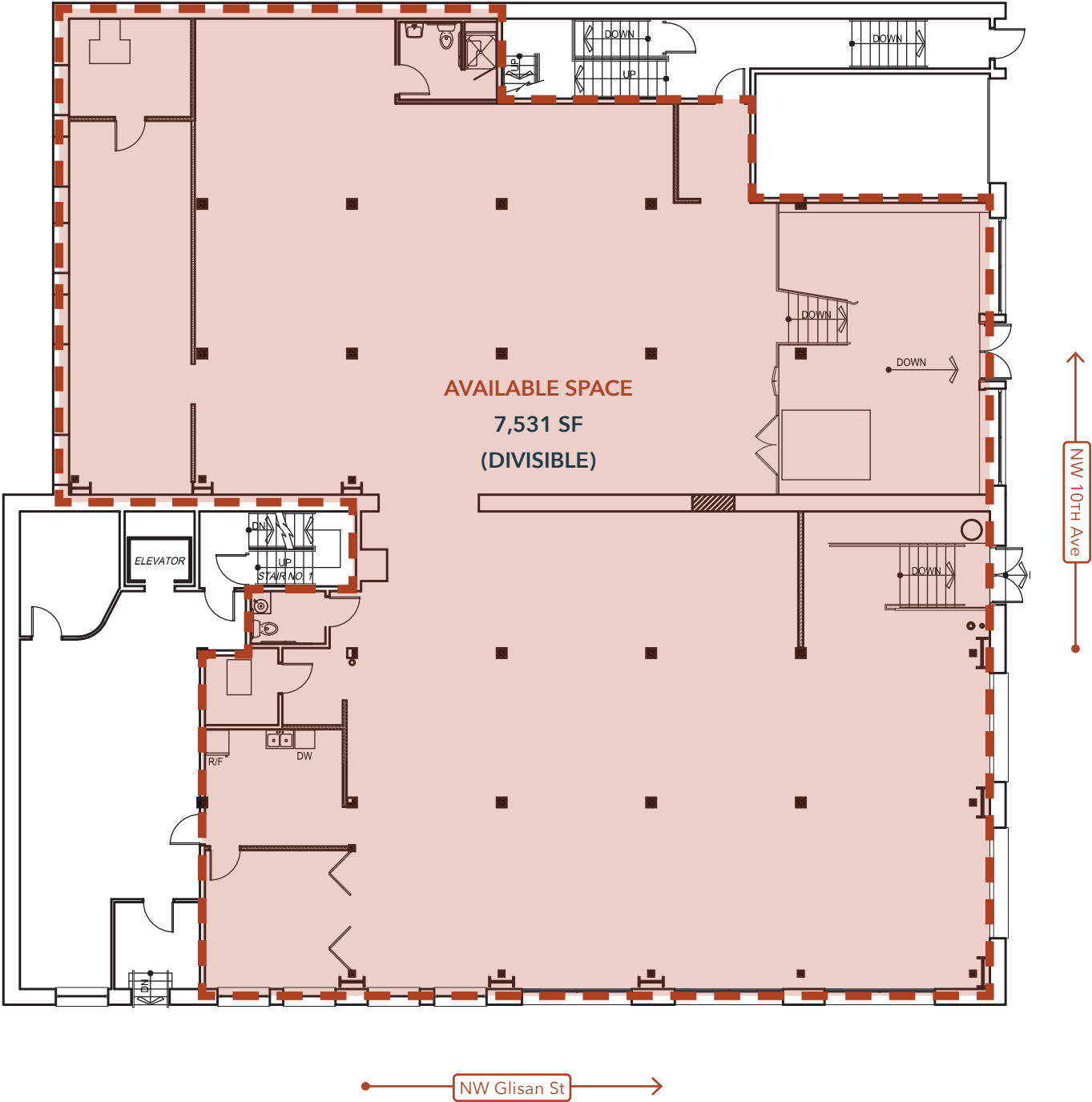
Available Now
Please Do Not Disturb Tenant

Uses

Second Generation Retail / Service



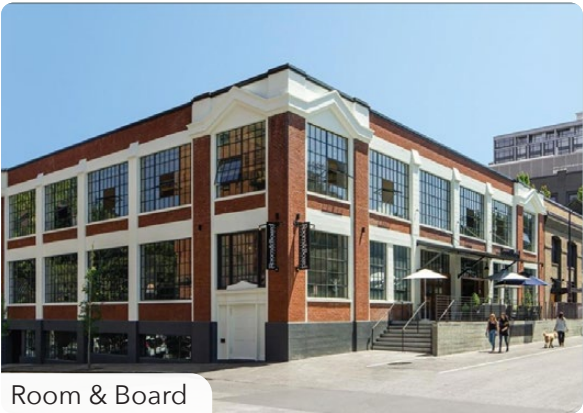
FLOOR PLAN



PEARL DISTRICT



Demographics	¼ Mile	½ Mile	1 Mile
2024 Population	6,175	25,819	58,147
Total Employees	11,589	36,058	98,750
Total Businesses	1,042	3,358	8,946
Median Household Income	\$114,442	\$85,739	\$77,948
Median Age	41.2	41.1	39
Any College	87%	76.6%	80.7%



Room & Board

The Pearl District

The Pearl District provides the perfect nexus of new and old, housing and employment, culture and entertainment. The conversion of this warehouse district to new retail and mixed-use space presents beautifully renovated historic warehouse spaces with state-of-the-art new housing, retail and office projects. Portlanders and tourists alike converge in this neighborhood to experience the blend of national, regional and local retailers with the charm of mixed-use living.



Design Within Reach

